

BRUNTON

RESIDENTIAL



WILLOW WAY, ELLINGTON, NORTHUMBERLAND

Asking Price £220,000

BRUNTON

RESIDENTIAL





BRUNTON

RESIDENTIAL



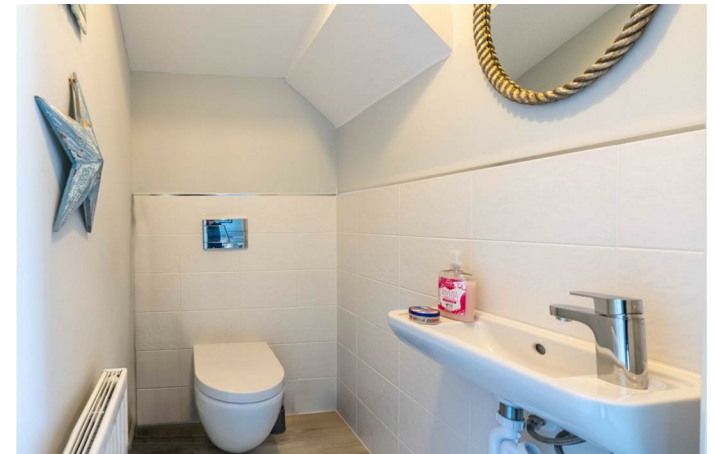
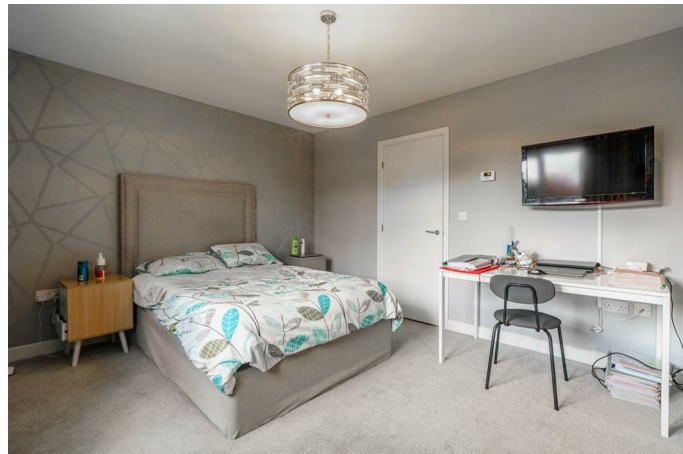


MODERN DETACHED - COASTAL VILLAGE LOCATION - NO UPPER CHAIN

Located in the popular Ellington Village, within a modern development, this former show home is well presented throughout and has a number of builder upgrades included,

Ellington is close to the beautiful Northumbrian coastline, with the areas of Cresswell and Druridge Bay which are approximately 1.5 and 4 miles away.

The village itself is served by a selection of local shops, public house and a successful primary school. Offered with no upper chain, this would make an ideal holiday home or investment property while the good sized rooms means it suits family life.



BRUNTON

RESIDENTIAL

The internal accommodation briefly comprises: Entrance hallway with stairs to the first floor and access to a ground floor cloakroom. To the front of the property is a modern kitchen/diner fitted with a range of wall and base units, integrated oven, hob, extractor fan, and space for further appliances, with space for a dining table. To the rear is a bright lounge featuring French doors leading to the rear garden.

To the first floor, the landing gives access to two double bedrooms, both presented to a good standard, and a family bathroom fitted with a bath, overhead shower, washbasin, and WC.

Externally, to the front there is a double block-paved driveway providing off-street parking. To the rear, the enclosed garden is laid to lawn with a paved patio area, decorative gravel border, and a storage shed.



BRUNTON

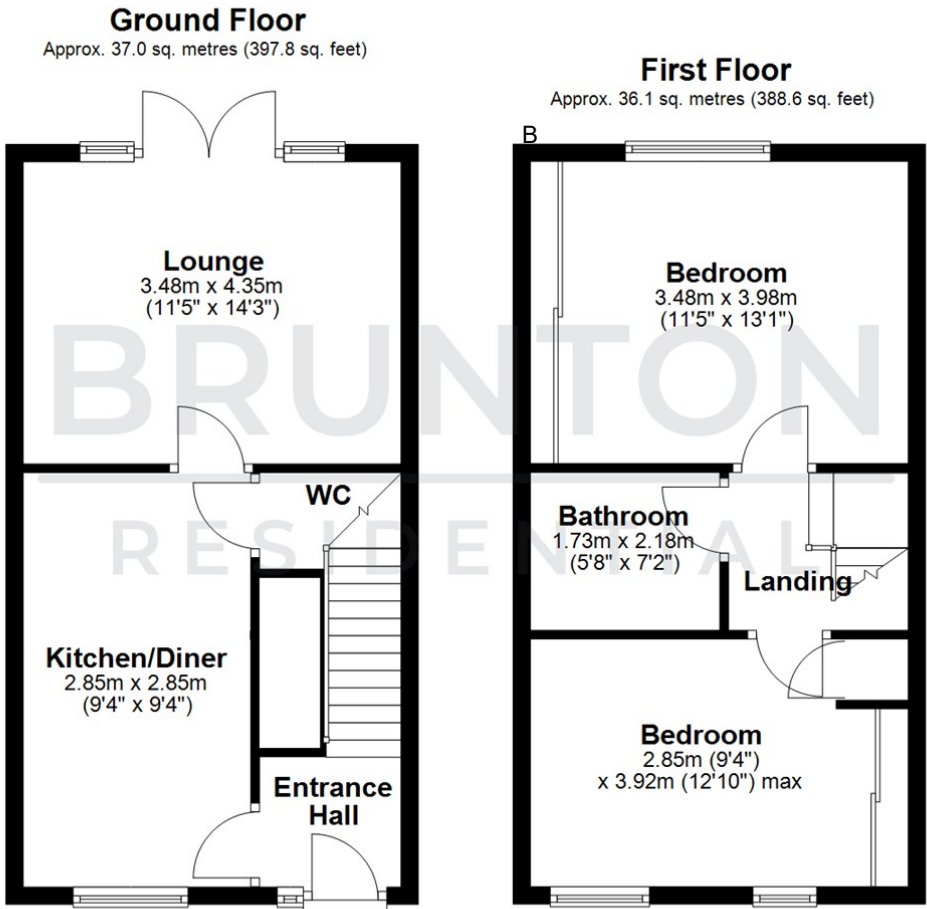
RESIDENTIAL

TENURE : Freehold

LOCAL AUTHORITY : Northumberland

COUNCIL TAX BAND : B

EPC RATING : B



All measurements are approximate and are for illustration only.
Plan produced using PlanUp.

